

Diagonal It Is!
Christopher Nejman Elegant Decorator Pillow



Easily create elegant decorator pillows with Christopher Nejman's Elegant Décor I collection by Amazing Designs.

Skill Level: Intermediate

Created By: Paula Spoon: QA Software Specialist for Amazing Designs

Required Software:

Amazing Designs® Edit 'N Stitch™ 2.0

Supplies: For quilt and embroidery designs

Amazing Designs Christopher Nejman's Elegant Décor I (ADP-21J) design collection
Embroidery hoop for 4 x 4 or larger (Baby Lock BMP6 with the 300 x 200 hoop was used with this project)

Robison Anton rayon & metallic machine embroidery thread

Medium to heavy weight cut-away stabilizer

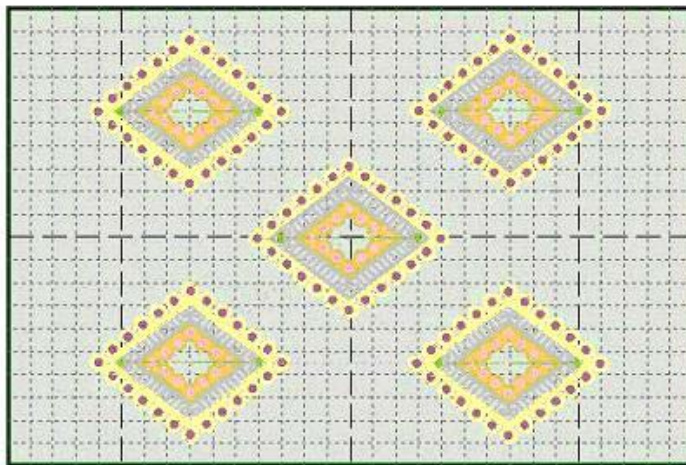
Fabrics & Supplies:

15 feet of decorative ribbon (up to 1/2" wide)
14" x 60" solid fabric for embroidery
2/3 yard light color fabric (for accent folds and backing)
1/4 yard contrasting color
2/3 yard accent braid
1/2 yard fusible knit interfacing
Thread for pillow construction
Steam iron
Rotary cutter, ruler and mat
Scissors
Straight pins
Polyfill stuffing for pillow
1/2 yard muslin for inside pillow form
Hand sewing needle
Water soluble marking pen

Instructions:

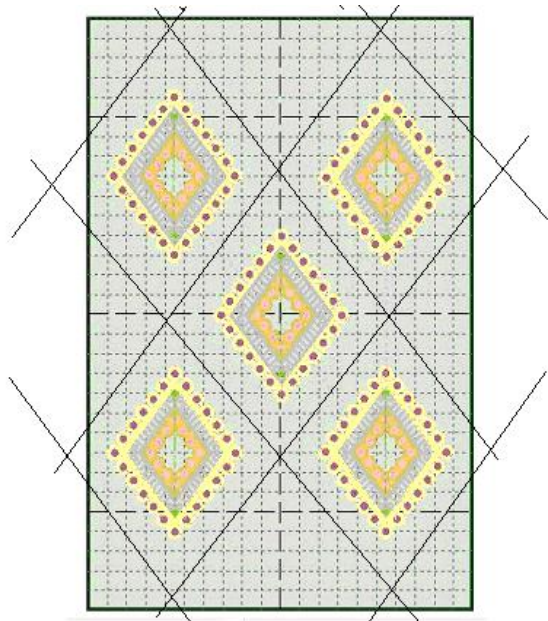
Pillow Front:

1. Open Edit 'N Stitch and select Elegant Décor I design #CN111.
2. Making sure the grid is turned on, copy and paste design #CN111 until you have 5 designs on the design page. (If you do not have a hoop size large enough, you can print out the template 5 times and place on your fabric and hoop each design and sew out.)
3. Align the designs until they are in a diagonal pattern on the design page. The closeness of the designs on the design page will be determined by your machine hoop size. (design size used with this project is approximately: 180.3 x 225.4) The best way to see if the designs are in correct alignment is to view the layout in Print Preview.



4. Save the file in your machine format.
5. From the solid fabric, cut one piece 14" x 19".
6. Hoop the stabilizer and the solid fabric piece for embroidery.
7. Embroider the design onto the fabric.
8. Remove the fabric from the embroidery hoop. Do not cut the stabilizer from the back.

9. Lay the ribbon between the embroidery designs, leaving extra length for overlapping beyond the embroidered areas. Lightly mark for ribbon placement. (See illustration below as a guide for placement)



10. Using glue stick, lightly glue the back of the ribbon strips and place the ribbons along the placement marks.
 11. Using straight stitch setting on your machine, sew along both edges of the ribbon.
 12. Trim away the excess fabric. The finished cut fabric piece will determine the length of side pieces and folded strips on each side.
 13. Cut 2 side strips 7" wide x 13-1/2" from the contrasting fabric. (Height may vary with your pillow size). Cut 2 pieces of the fusible knit interfacing and iron to the wrong side of the contrasting fabric pieces.
 14. Cut 4 strips 2-1/2" wide x 13-1/2" long (length may vary with your pillow size) from the light fabric. Fold strips in half lengthwise, and press.
 15. Place outside light fabric strip on the contrasting fabric first, 1" from edge of fabric. Sew in place. (Do this with both contrasting fabric pieces.)
 16. Place the second folded strip along the edge of the contrasting fabric. Sew in place. (Do this with both contrasting fabric pieces.)
 17. Lay the finished contrasting fabric pieces on top of the embroidered piece overlapping the edges 1/2". Sew in place. (This eliminates a very heavy seam).
 18. Lay the braid on top of the raw, overlapped edges and sew in place. (Use the glue stick to hold the braid in place before sewing)
- Note:** The braid can unravel very easily. It is best to straight stitch the edges after cutting the length you need to prevent further unraveling.
19. Trim any uneven edges on the finished pillow top.

Pillow back:

Back will be cut into two pieces that will overlap in the middle 2-3". This will form an opening to easily insert the pillow.

1. Overlapping edges: Press under 1/4" then fold over and press again. Stitch folded edge with straight stitch.
2. With right sides together, place the back pieces on top of the pillow front, overlapping the two pieces.
3. Sew all around with 1/2" seam allowance. Trim corners and turn inside out. Press edges of pillow.

Pillow form:

1. Cut two pieces of muslin 1/2" larger than the finished pillow size.
2. With right sides together, sew all around the edges leaving an opening large enough to add polyfill stuffing.
3. Turn inside out and stuff with polyfill.
4. Hand sew the opening closed.
5. Place inside finished pillow.

Enjoy your new decorator pillow!